

MONTHLY MEMBERSHIP PROGRESS REPORT

District 13 OH2

Results as of: 5/31/2024

GMT:

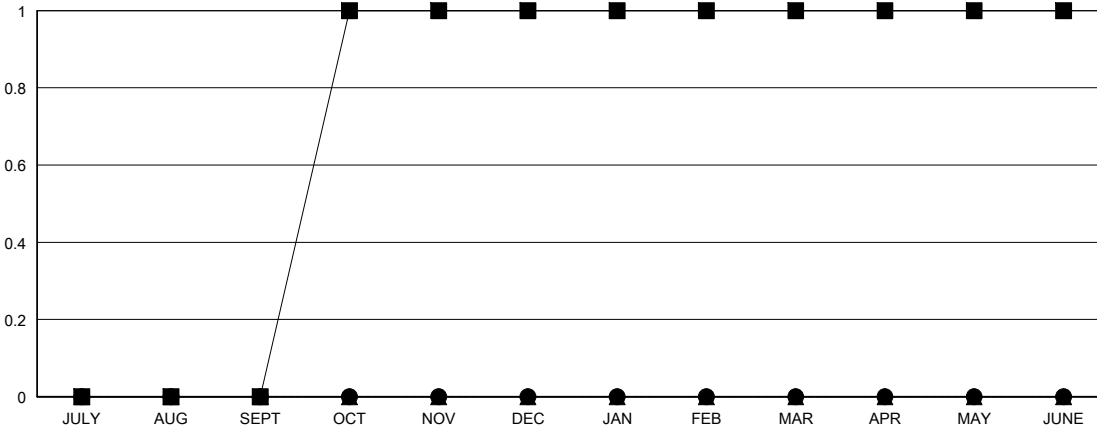
LOCATION OHIO

GMT CA

Clubs			
RESULTS FOR 2023-2024			
QUARTER	NEW CLUB GOAL	NEW CLUBS	DROPPED CLUBS
JULY/AUG/SEPT	0	0	1
OCT/NOV/DEC	1	0	0
JAN/FEB/MAR	0	0	0
APR/MAY/JUNE	0	0	0

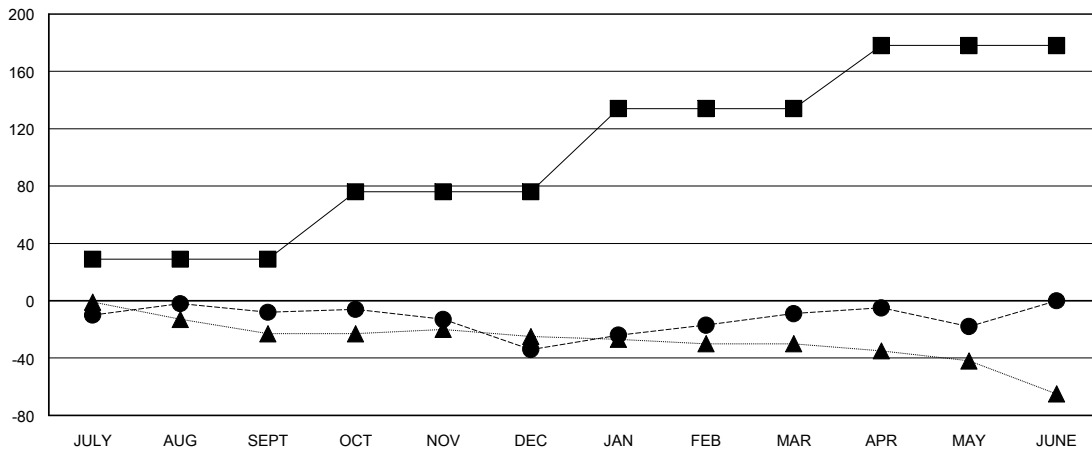
Members			
RESULTS FOR 2023-2024			
QUARTER	MEMBER GROWTH NET GOAL	MEMBER GROWTH ACTUAL	DROPPED MEMBERS ACTUAL (including transfers)
JULY/AUG/SEPT	29	45	52
OCT/NOV/DEC	47	27	50
JAN/FEB/MAR	58	44	17
APR/MAY/JUNE	44	17	24

GOALS AND ACTUAL NEW CLUBS CUMULATIVE



- - CURRENT YEAR GOALS FOR NEW CLUBS
- - CURRENT YEAR ACTUAL NEW CLUBS
- ▲ - LAST YEAR ACTUAL NEW CLUBS

GOALS AND ACTUAL MEMBERS CUMULATIVE



- - MEMBER GROWTH NET GOAL
- - MEMBER GROWTH ACTUAL
- ▲ - LAST YEAR MEMBERSHIP ACTUAL

DROPPED CLUBS: 1	30 CLUBS OF 54 ADDED 1 OR MORE NEW MEMBERS	GENDER DISTRIBUTION
		MALE 1,141 (68.69%)
		FEMALE 520 (31.31%)
DROPPED MEMBERS	CLICK HERE FOR CUMULATIVE MEMBERSHIP DATA	TOTAL FAMILY UNIT MEMBERS 374
DECEASED 28		FAMILY MEMBERS PAYING HALF DUES 190
CLUB CANCELLED 0		
OTHER 115		
TOTAL 143		